

MINI TINIEST

The tiniest, most vulnerable kittens require gentle and frequent care.



• pink in color, umbilical cord attached, eyes closed
• 97 degrees; can't regulate temp.

1 WEEK



- eyes closed, ears folded, no umbilical cord
- eyes open at 8-12 days

2 WEEKS



- eyes completely open, blue color
- wobbly on their feet

MINI WEANIES

As kittens age, you'll help them reach important developmental milestones.



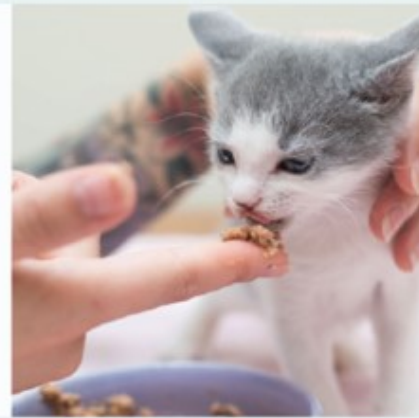
• incisors emerging, ears unfolded
• discovering litterbox

4 WEEKS



- canines emerging
- walking confidently & exploring their surroundings

5 WEEKS



- premolars emerging
- weaning slowly onto wet kitten food

MINI KIDS CLUB

These social, independent, and coordinated kittens are almost ready for adoption.



• premolars emerging
• coordinated; like a miniature cat

7 WEEKS



- all milk (deciduous) teeth have emerged
- transitioning into adult eye color

8 WEEKS



- once 2 pounds, kittens can be spayed/neutered and placed in their forever home!